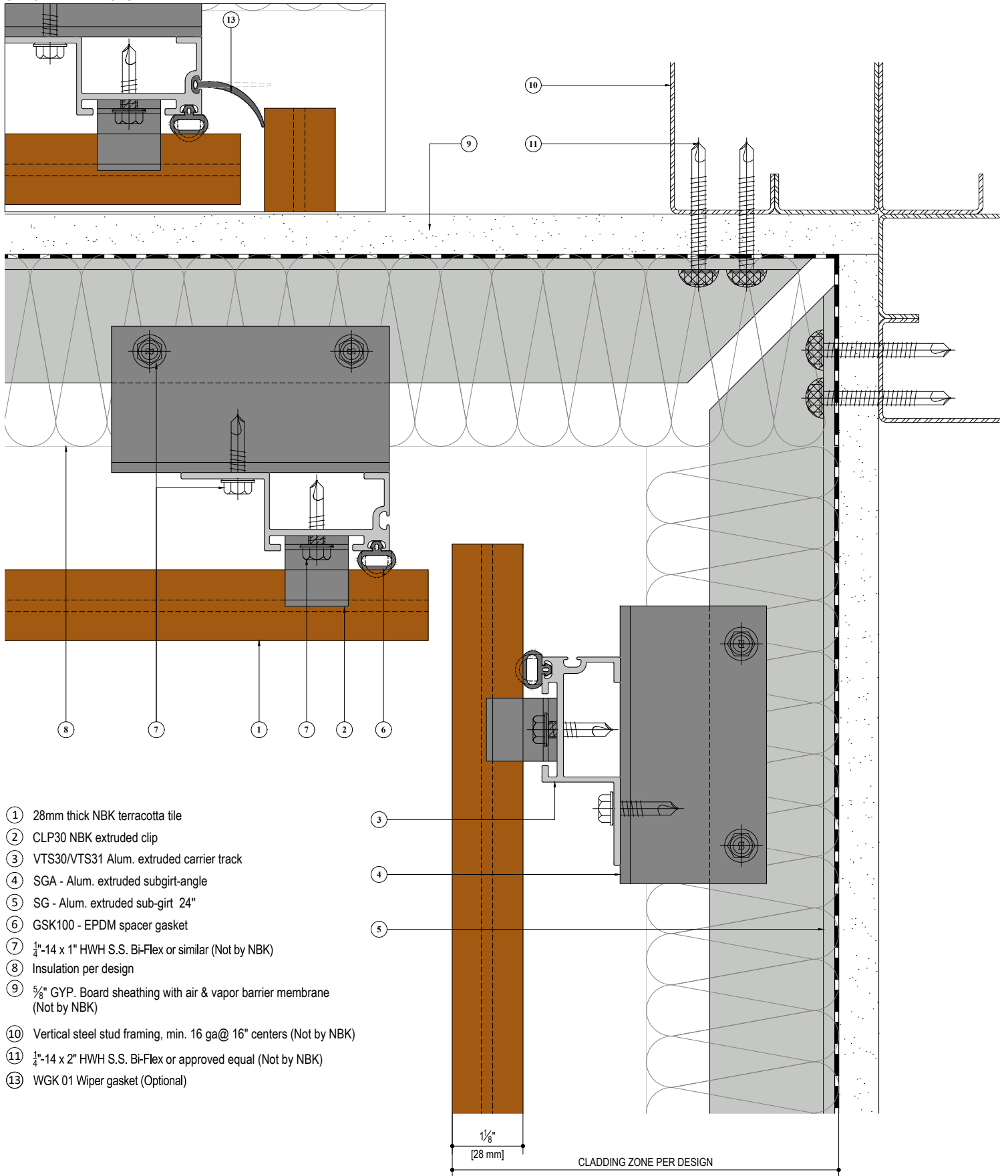


**OPTIONAL WIPER GASKET**



- ① 28mm thick NBK terracotta tile
- ② CLP30 NBK extruded clip
- ③ VTS30/VTS31 Alum. extruded carrier track
- ④ SGA - Alum. extruded subgirt-angle
- ⑤ SG - Alum. extruded sub-girt 24"
- ⑥ GSK100 - EPDM spacer gasket
- ⑦ 1/4"-14 x 1" HWH S.S. Bi-Flex or similar (Not by NBK)
- ⑧ Insulation per design
- ⑨ 5/8" GYP. Board sheathing with air & vapor barrier membrane (Not by NBK)
- ⑩ Vertical steel stud framing, min. 16 ga@ 16" centers (Not by NBK)
- ⑪ 1/4"-14 x 2" HWH S.S. Bi-Flex or approved equal (Not by NBK)
- ⑬ WGK 01 Wiper gasket (Optional)

1/8"  
[28 mm]

CLADDING ZONE PER DESIGN

SYSTEM:  
**TERRART 28**

DETAIL:  
**STANDARD STUDWALL DETAIL**

DETAIL NUMBER:  
**NBK-HS-28-07**

TILE DIRECTION:  
**HORIZONTAL**

DRAWING REFERENCE:  
**TYPICAL INTERNAL CORNER**

SCALE:  
**1:2**

**NBK** | ARCHITECTURAL  
TERRACOTTA  
A Hunter Douglas Company

**NBK North America**  
10 Federal Street, Second Floor  
Salem, MA 01970  
Telephone: +1 (781) 639 2662  
www.nbkterracotta.com